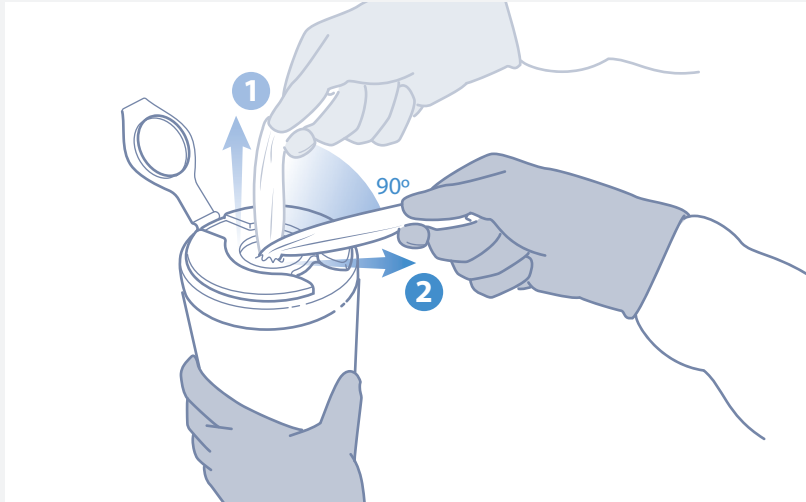


CaviWipes1™

If gross debris is present on the surface:

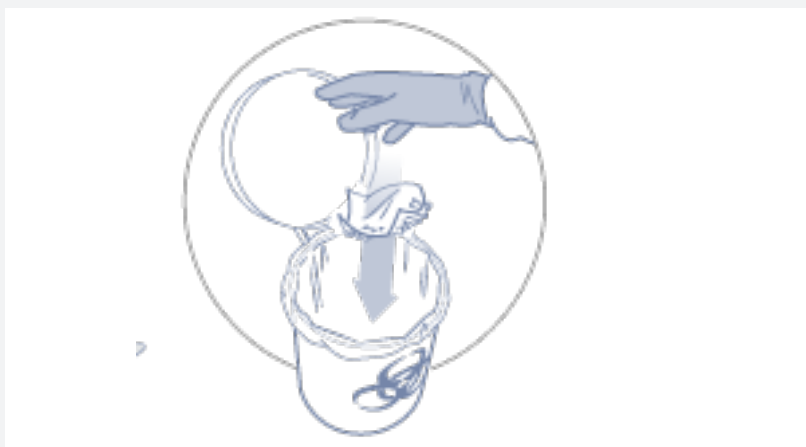
1. Pull out CaviWipe1 towellette, tearing at a 90° angle.



2. Use CaviWipes1 towelette(s) to completely pre-clean surface of all gross debris



3. Dispose of used towelette in accordance with Federal, State, and local regulations for infectious materials disposal.



Disinfect after Cleaning

4. Pull out additional CaviWipes1 towelette, tearing off at a 90° angle
5. Disinfect precleaned surface with towelette. Leave surface wet for 1 minute. Dispose of used towelette



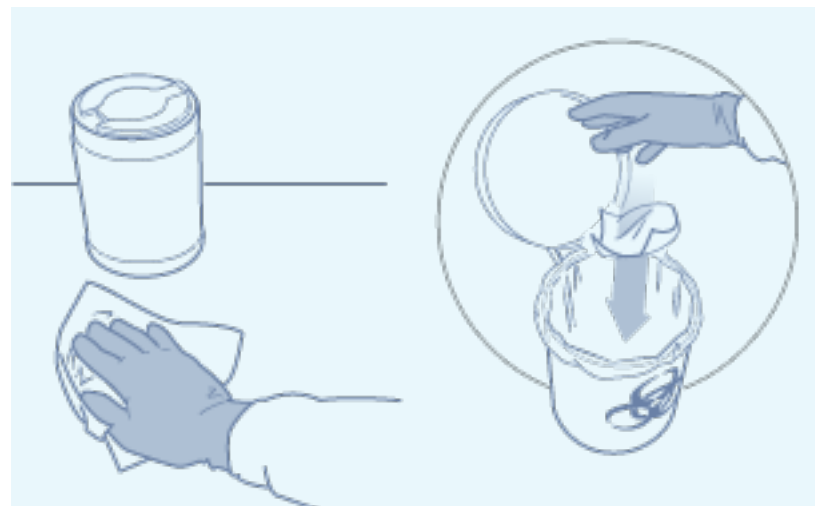
If NO gross debris is present on the surface:

1. Pull out CaviWipe1 towellette, tearing at a 90° angle.



2. Disinfect surface with towelette. Leave surface wet for 1 minute.

3. Dispose of used towelette in accordance with Federal, State, and local regulations for infectious materials disposal.



Ordering Information

Part No.	Description	Packaging
13-5100	CaviWipes1, 6" x 6 3/4" (canister of 160)	12 canisters / case
13-5150	CaviWipes1, 9" x 12" EXTRA LARGE (canister of 65)	12 canisters / case
13-5155	CaviWipes1, 9" x 12" EXTRA LARGE Singles (box of 50)	6 boxes / case
13-5224	CaviWipes1, Flat Packs, 7" x 9" (pack of 45)	20 packs / case
13-1175	CaviWipes canister wall bracket	12 brackets / case
13-1185	Flat Pack Wall Mount	20 mounts / case

