

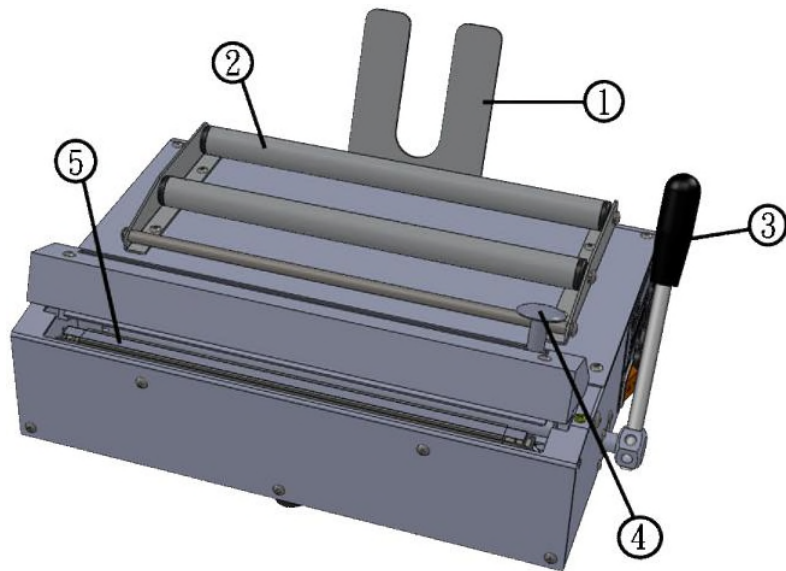
Impulse Medical Pouches Sealer



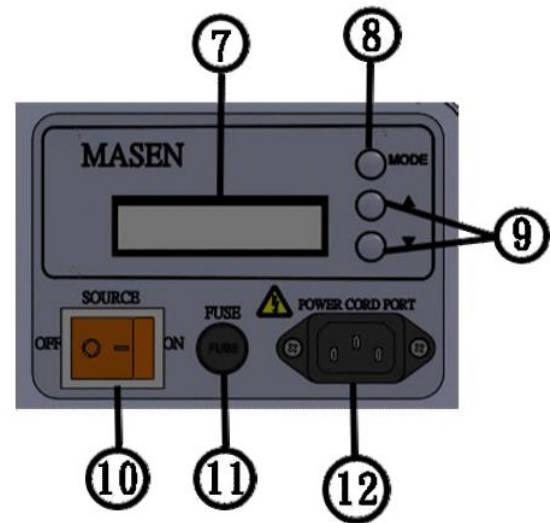
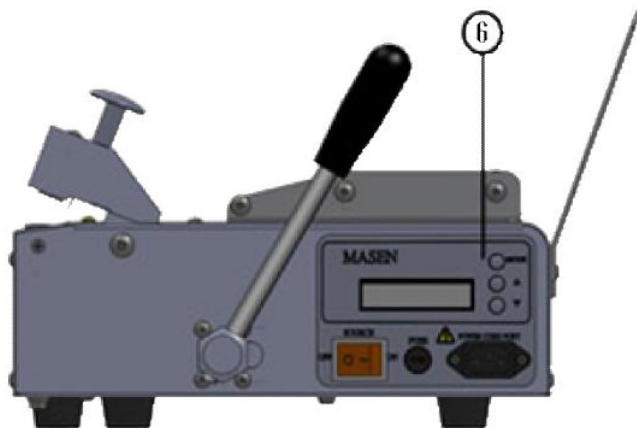
D-3010HCA

OPERATION MANUAL

Identifying Parts



No.	Parts
1	Back stopper
2	Rollers
3	Operating Lever
4	Cutter
5	Seal Bar
6	Control Panel
7	Window
8	Mode button
9	Control button
10	Power Indicator Switch
11	Fuse
12	Power Cord Port



Specification

Voltage	Power	Sealing Dimension	Sealing time	Cooling time	Machine Weight	Machine Dimension
110V/220V 50/60Hz	1300W	330*10mm	0-6 sec.	0-9 sec.	9.9kgs	470*320*202mm

Setting Function

- **Function:**

- > Mode: change and set the functions
- > Sealing: set the sealing time (0.0-6.0 sec.)
- > Cooling: set the cooling time (0.0-9.0 sec.)
- > Set Count XXXX: set the sealing number of times (1-9999 times)
- > Set Count 00?? : count the operating number of times automatically after sealing

- **Setting Function:**

1. If you want to set sealing time, press “MODE” to show “SEALING”. After that press “MODE” about 3 seconds, and the window will flash. Depend on your requests and thickness of bags to adjust “▲ / ▼ ” for setting sealing time (0.0~6.0sec.).
2. If you want to set cooling time, press “MODE” to show “COOLING”. After that press “MODE” about 3 seconds, and the window will flash. Depend on your requests and thickness of bags to adjust “▲ / ▼ ” for setting cooling time (0.0~9.0sec.).
3. If you want to set the operating number of times, press “MODE” to show “Set Count XXXX”. After that press “MODE” about 3 seconds, and the window will flash. Depend on your requests and thickness of bags to adjust “▲ / ▼ ” for setting the sealing number of times (1~9999).
4. If you want to reset “Set Count 00??”, press “MODE” to show “Set Count 00??” on the window, then press “▲ / ▼ ” at the same time, and the machine will reset to “SET COUNT 0000”.
5. After finishing setting the functions, the window will flash about 5 sec. and stop flashing finally.

- **Tips of finishing sealing:**

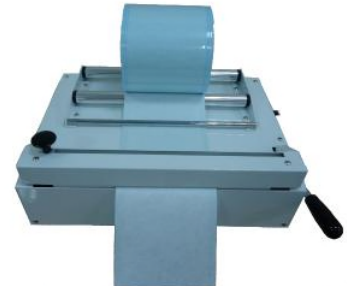
1. When finishing sealing, the machine will utter “Bi” once.
2. If you set the sealing number of times, the machine will utter “Bi” three times when finishing sealing.

Operating Steps

1. Put a roll of medical pouch on. Turn the power switch on, and the power indicator light will be on and the window will show “SEALING”, “COOLING” and “SET COUNT XXXX” in turn. If you need to set functions, press “MODE” to change the function which you want to set.



-
2. According to the demand, adjust the length of medical pouch, and pull operating lever down. The machine will start to function.



-
3. The machine will utter “Bi” once when finishing sealing. Using the cutter to divide the pouch from the roll of medical pouch and pulling operating lever up.



-
4. Put the articles into the medical pouch, and then place the pouch on the sealing line. Pulling operating lever down.



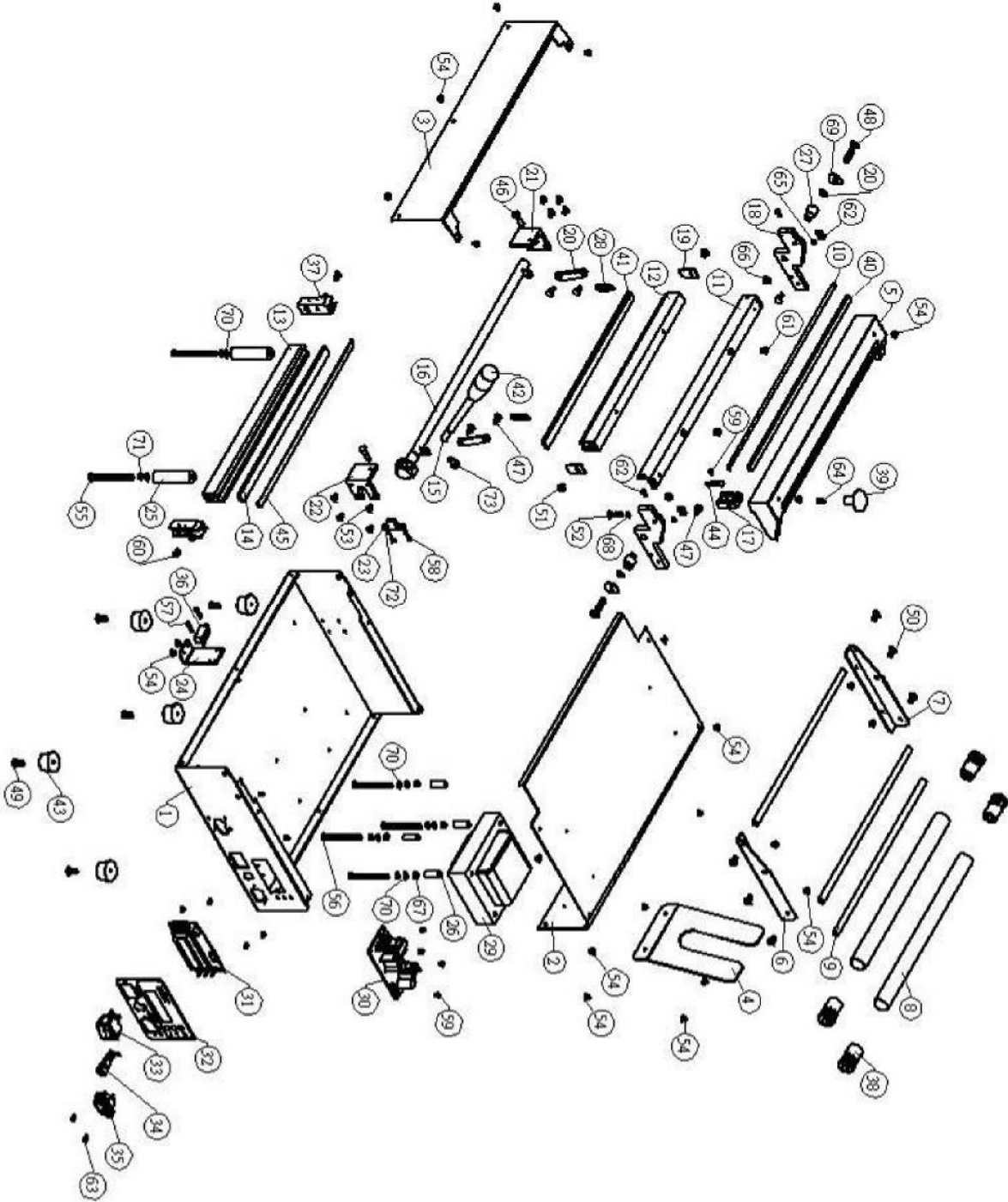
-
5. The machine will utter “Bi” once when finishing sealing. Then pulling operating lever up.



Maintenance & Repair

1. Keep the basic function and cleanness of inside and outside machine.
Make maintenance after machine working.
2. Stay efficiency of every functional button; ask for professional technician if any breakdowns.
3. Make sure the power voltage correctly before operating machine to avoid running mistake.
4. Shut down the power before machine inside maintenance. Do not remove the machine parts for the purpose of stopping the dangerous operation. Ask for professional technician if any parts are abnormal.
5. Heating element and Teflon cloth are all the consuming articles that will affect the machine operating functions if some cases caused as follows:
 - A. Heating element should be changed if any break happened.
 - B. Teflon cloth should be changed when it is burned or broken to stop short circuit and fire.
 - C. Teflon tape should be changed when replace the Heating element.
6. If any parts should be changed, use our standard and specification parts to ensure proper sealing.
7. When machine running, the heating base shell be having high temperature, do not touch it to avoid burns.

Parts List



No.	1	9	17	25	33	41	49	57	65	73
Parts	Bottom plate	Shaft	Knife holder	Aluminum tube	On/Off switch(orange)	Silicon bar	Screw M5*16.	Screw M3*16	Screw M4*5	E-retainir ring 12
No.	2	10	18	26	34	42	50	58	66	
Parts	Back cover	Knife rail post	Press housing supporter	Supporter tube of adaptor	Fuse base	End cap of handle bar	Screw M6	Screw M3*10	Nut M6	
No.	3	11	19	27	35	43	51	59	67	
Parts	Front cover	Aluminum connecting plate	End cap of aluminum bar	Supporter shaft	Power plug setting base	Bottom housing pad	Screw M5*8	Screw M3*6	Nut M5	
No.	4	12	20	28	36	44	52	60	68	
Parts	Back stopper	Aluminum bar (upper)	Connecting plate	Spring	Micro switch	Knife	Screw M4*25	Screw M5*12	Nut M4	
No.	5	13	21	29	37	45	53	61	69	
Parts	Press housing	Aluminum bar (bottom)	Holder of main shaft (L.)	Adaptor	Sealing wire bracket	Heating element	Screw M4*8	Screw M5*10	Washer M6	
No.	6	14	22	30	38	46	54	62	70	
Parts	Roller fixed base (R.)	I type aluminum bar	Holder of main shaft (R.)	PC board	Roller end cap	Screw 6*21.7	Screw M4*6	Screw M3*10	Washer M5	
No.	7	15	23	31	39	47	55	63	71	
Parts	Roller fixed base (L.)	Handle bar	Side end cap of main shaft	Program settings PC board	Knob	Screw 6*5.3	Screw M5*80.	Screw M3*10	Spring washer M5	
No.	8	16	24	32	40	48	56	64	72	
Parts	Roller	Main shaft	Holder of micro switch	Control setting sticker	Silicon pressing bar(orange)	Screw M6*35	Screw M5*70.	Screw M5*12	Spring washer M3	

TROUBLE SHOOTINGS

Most sealers work on principle that when the Sealing Bar is pressed down, it activates a Microswitch which allows electric current to pass through the Heating element (Wire). The Timer automatically controls the Sealing Time. If there is no Timer, then the Sealing Time is manually controlled. Sealing is followed by Cooling (the working Time is needed for sealing to set) and this affects the beauty of the seal. In manual operation, this is dependent on how long the Sealing Bar is pressed after the Pilot Light goes off. In the automatic operation, this is the Congealing Time.

MALFUNCTIONS	REASONS:	SUGGESTIONS:
No sealing Power Lamp is OFF	Disconnecting Plug Power Cord is broken Transformer is broken	*Check or change the Plug. *Replace or repair the Cord. *ReplacetheTransformer.
No sealing Power Lamp is ON Sealing Lamp is ON	Heating Element broken Spring Hook or mounting Spring is loose or poor contact Terminals of the Heating Element do not make a good contact.	*Replacethe Heating Element. *Tighten Spring Hook connection *CleantheTerminals and adjust if needed
No sealing Power Lamp is ON Sealing Lamp is OFF	Microswitch not activated. Defective Microswitch	*Adjust Microswitch Lever *AdjustMicroswitch position *Replace Microswitch
Teflon Cloth burn	Timer malfunction Prolonged HeatingTime	*ReplaceTimer or Relay *DecreasetheTimer setting
HeatingWire broken	WornTeflonAdhesiveTape (under the Heating Element)	*ReplacetheTeflonAdhesiveTape
Seal is wrinkled	HeatingTimer is set too high. Cooling time is not enough	*Lower theTimer setting *Continue pressing the Sealing Bar 1-2 sec. after the pilot light goes OFF
Imperfect sealing	WornTeflon Cloth Worn Silicon Rubber	*ReplacetheTeflon Cloth *Replace Silicon Rubber
Broken seal	Prolonged sealing time.	*DecreaseTimer setting
Non-full-weld seal	Sealing time too short.	*Increase sealing time.
Seal sticking	DirtyTeflon Cloth Dirty Silicon Rubber	*CleantheTeflon Cover. *Cleanthe Silicon Rubber

IMPORTANT

IMPORTANT: *always disconnect the Sealer's power cord from the electrical receptacle before replacing any parts.*

Before operating, check the Heating Element, Teflon Cloth, Silicon Rubber, Teflon Tape.

Safety Instructions: **Read before operating the Sealer.**

- 1. Read** all instructions before use. Save these instructions for later use.
- 2. Follow** all warning & instructions marked on the product.
- 3. Unplug** this product from the power source before cleaning and / or changing any parts.
- 4.** Do not rest anything on the Power Cord. Do not place the machine where the Power Cord may be stepped on or pulled.
- 5.** Always **keep out** of reach of **children** and pets.
- 6.** This sealer should only be in use with an **operator** in attendance.
- 7. Never touch** the Heating Elements with bare hands while the sealer is plugged into a power source, or in operation, or just finish operation. It is **HOT**.
- 8. Never insert** clothing, hand or fingers between the Sealing Jaws of sealers or into the feed opening of continuous sealers.
- 9.** Be sure to **check** for **worn parts** before starting operation.
- 10.** Do not operate with a **damaged Power Cord** or plug.
- 11.** Always keep the unit **clean**. Do not use water. Silicone spray may be used to clean the unit. Be sure the unit is unplugged from the power source before cleaning.
- 12.** When changing **blade**, (for sealer with cutter), be **careful** of the sharp edge.
- 13.** When changing the Teflon Adhesive, be sure that the **entire surface** under the Heating Element is covered with Teflon Adhesive. Bend down the excess Teflon Adhesive on both ends. This prevent the Heating Element from breaking and the machine from **grounding**.
- 14.** When replacing **fuse**, be sure the exact voltage and ampere is used.
- 15.** Be sure to keep a record of your model number. Specify this number when ordering parts.
- 16.** When replacing any parts, be sure to **marked down** the exact locations of the connections, and the orders of the different pieces.

The sealer is built to last for **years** and if you encounter any problems, just contact your dealers.